

PROPOSED PHASE 1 IMPROVEMENTS 2014

A new glass wall will be made opening up the south side of the building.

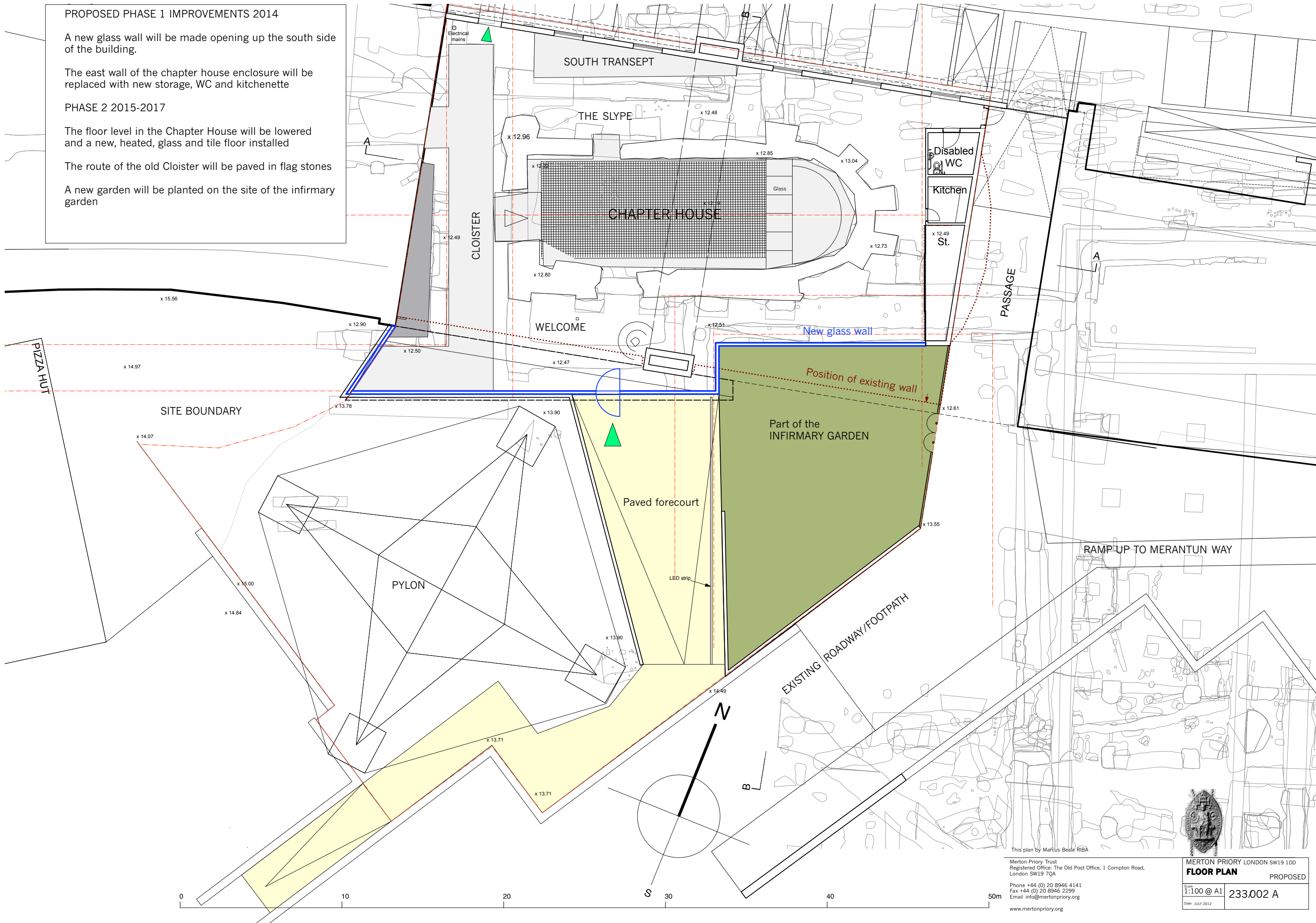
The east wall of the chapter house enclosure will be replaced with new storage, WC and kitchenette

PHASE 2 2015-2017

The floor level in the Chapter House will be lowered and a new, heated, glass and tile floor installed

The route of the old Cloister will be paved in flag stones

A new garden will be planted on the site of the infirmary garden



This plan by Marcus Beale RIBA

Merton Priory Trust
Registered Office: The Old Post Office, 1 Compton Road,
London SW19 7QA

Phone +44 (0) 20 8946 4141
Fax +44 (0) 20 8946 2299
Email info@mertonpriory.org

www.mertonpriory.org



MERTON PRIORY LONDON SW19 1DD
FLOOR PLAN PROPOSED

Scale 1:100 @ A1 233.002 A

Date JULY 2012